

XRR-SKI RELENTLESS RIPPER

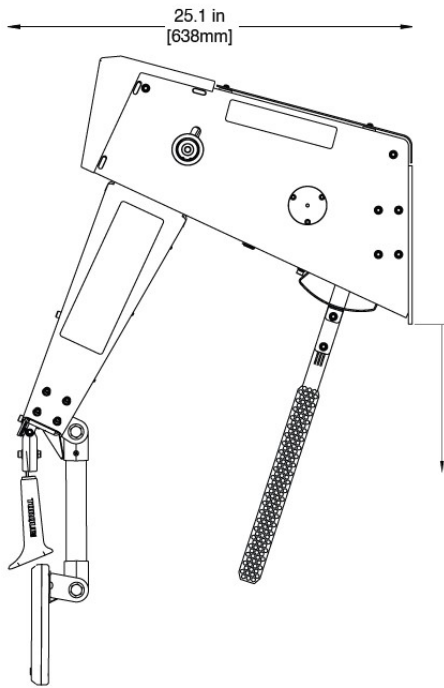
2024-11-25

COMPATIBILITY

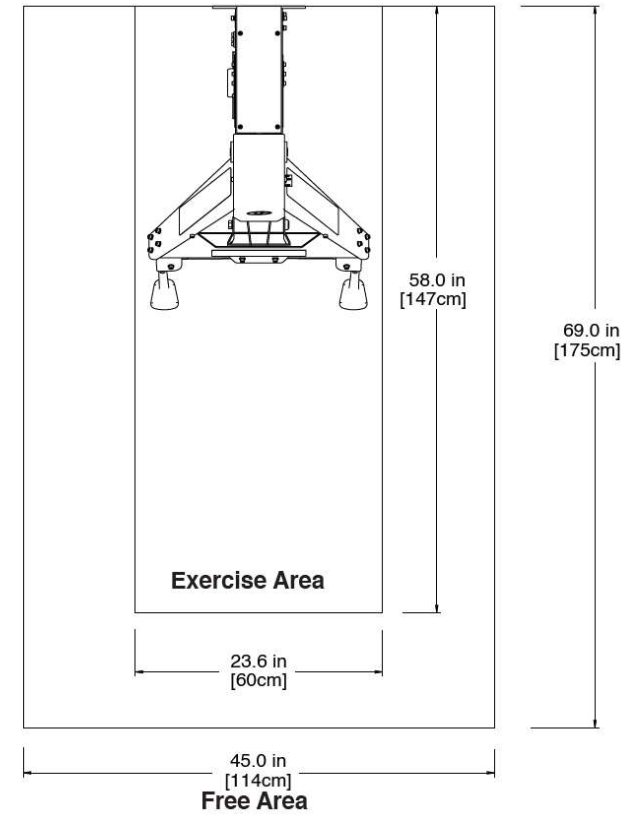
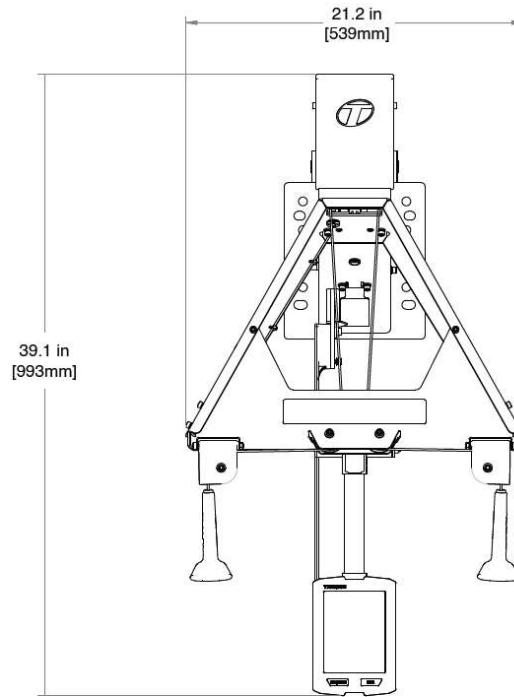
TORQUE USA

**DON'T QUIT.
EVER.™**

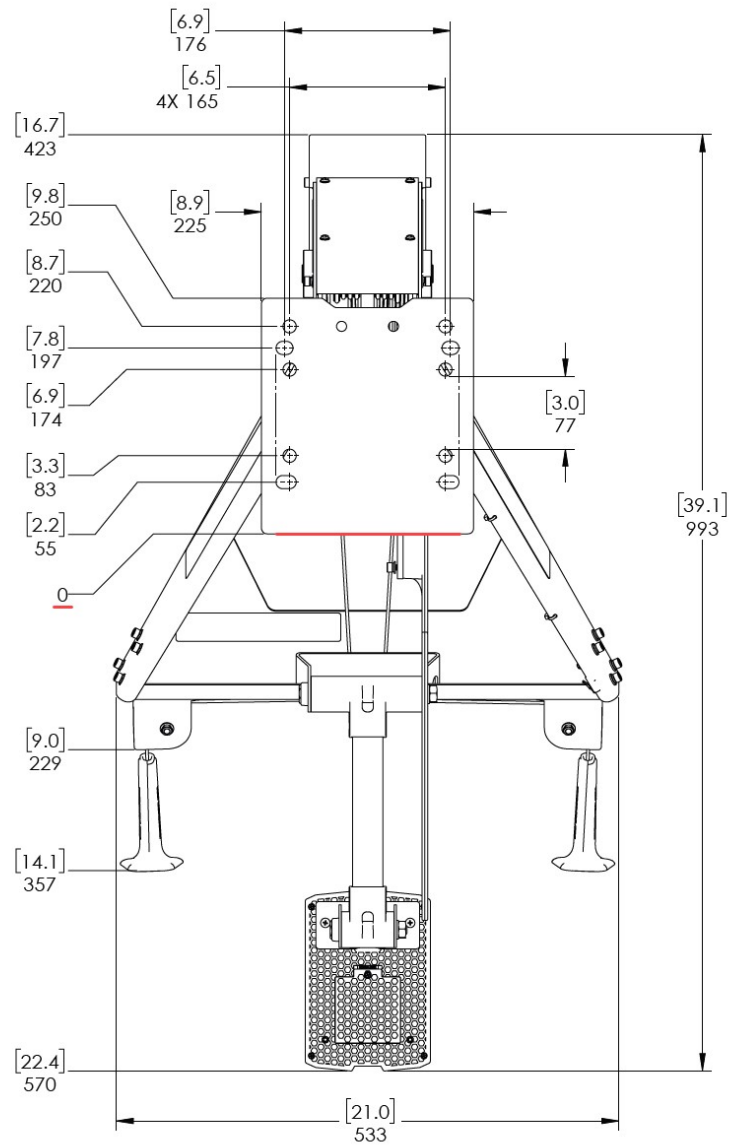
PRODUCT SPECS



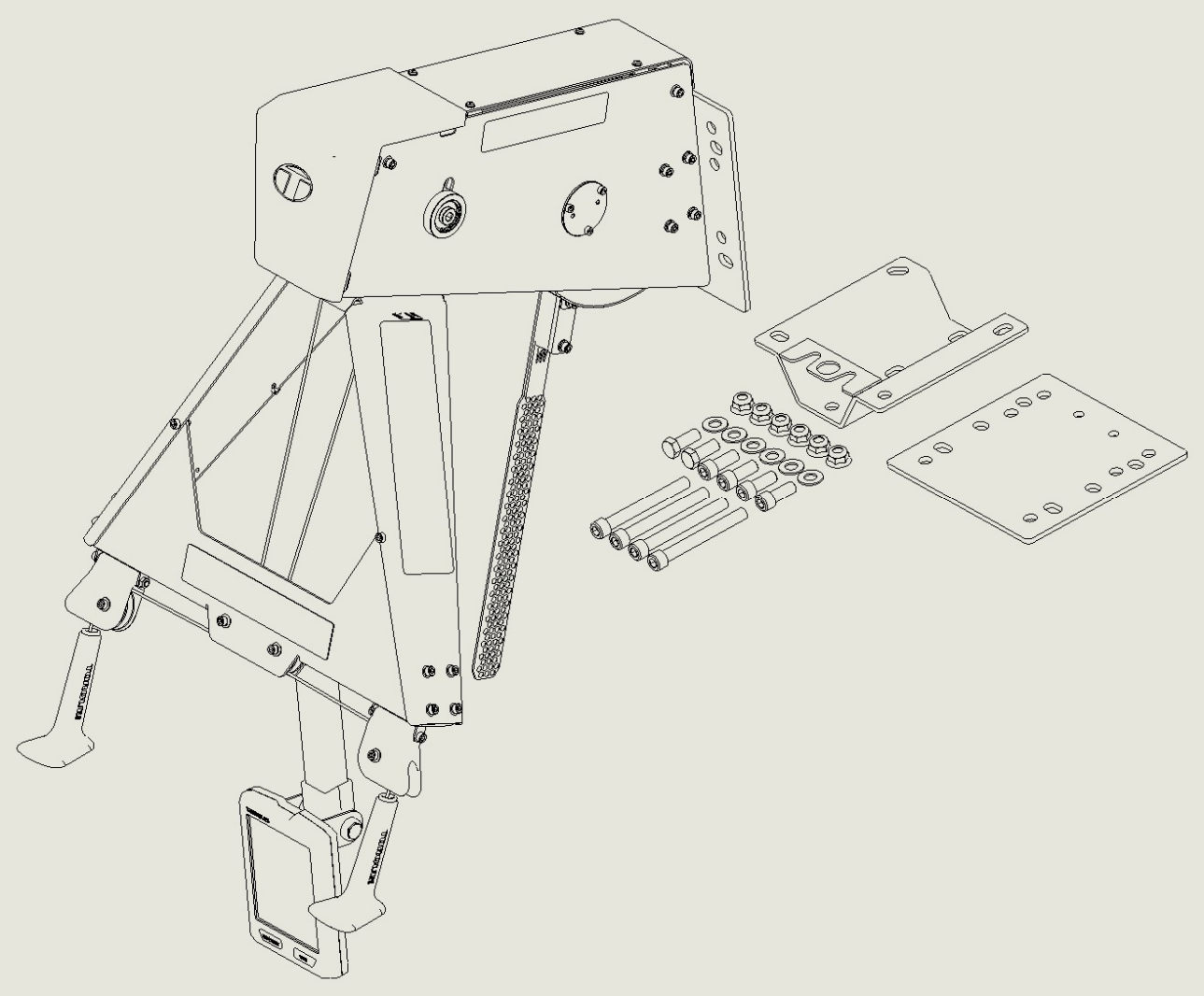
Suggested distance to floor:
90 in
[2285mm]



PRODUCT SPECS



WHAT IS INCLUDED



INCLUDED IN INSTRUCTIONS

A Printed copy of assembly instructions is included in the XRR-SKI. This document provides instructions for mounting to a wall and references the web address for other manuals:

5. Optional Wall Mount (WMB-RRR)

Note: *These instructions are for wall mounting only. If mounting to a rack, rig, or X Create, use the instructions provided with that product. Find instructions here: <https://commercial.torquefitness.com/pages/assembly-manuals>*

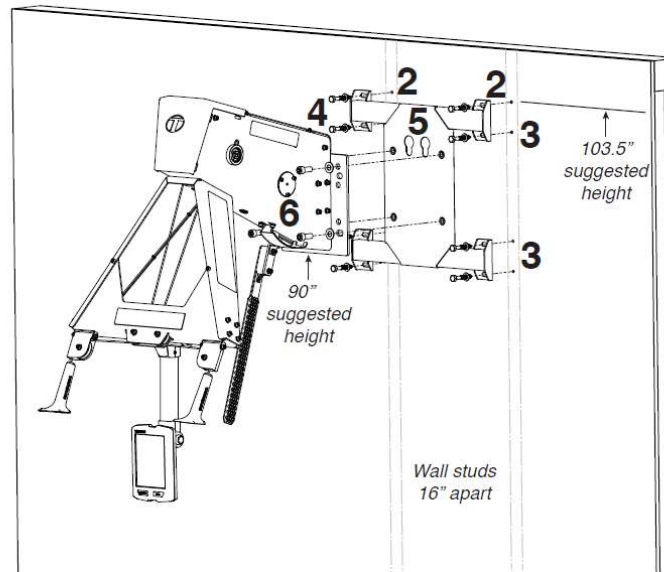
INCLUDED IN INSTRUCTIONS

Optional Wall Mount
available for this and
the XERT

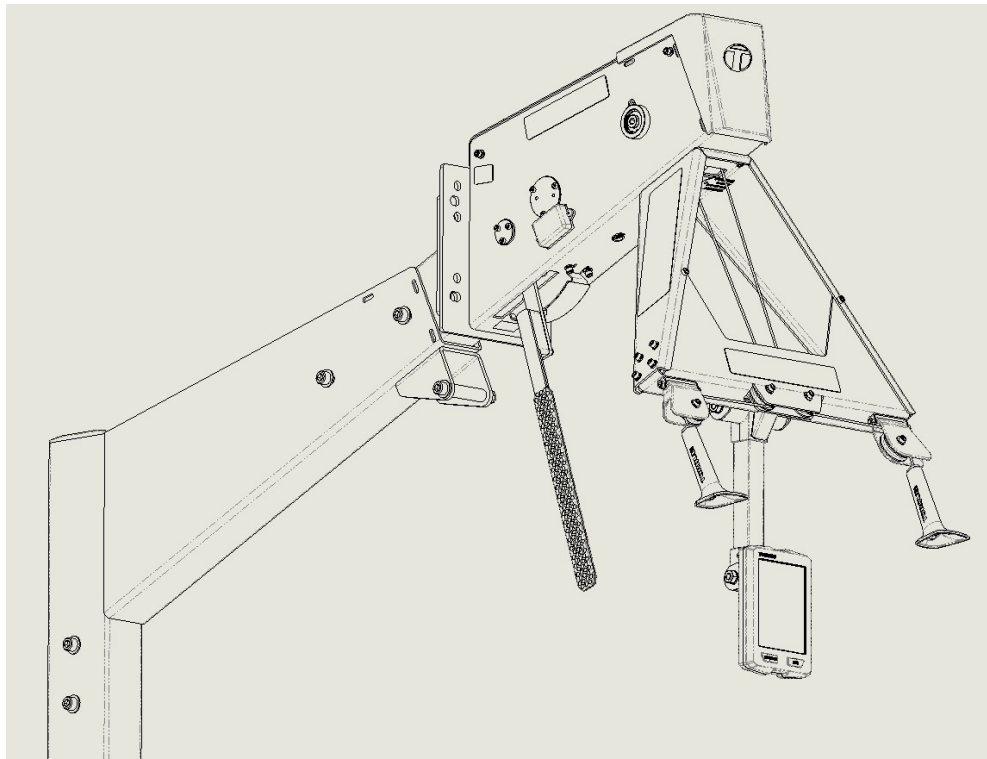
5. Optional Wall Mount (WMB-RRR)

Wall Mount Installation Instructions, continued

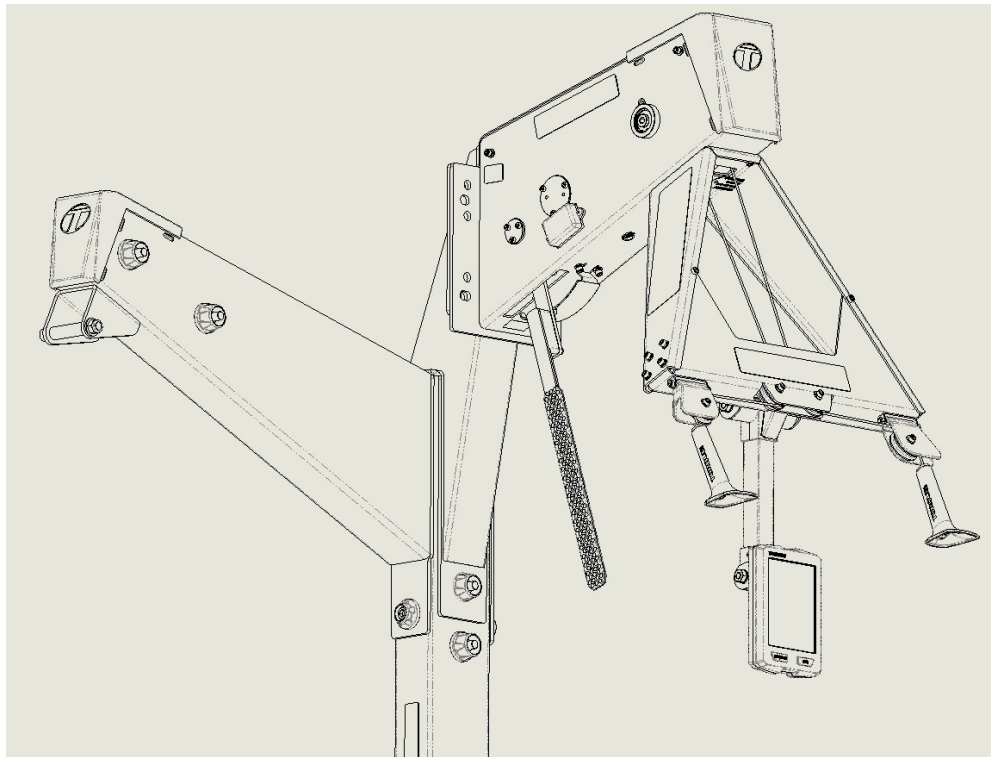
2. Drill top two (2) - 11/64" pilot holes in center of wood studs that are 16" apart.
Note: Torque Fitness does not recommend mounting the unit to metal studs.
3. Hang wall mount from top two screws and drill remaining pilot holes.
4. Use wrench or socket to properly install all 8 lag screws as shown.
5. Hang unit on wall mount from key-hole slot bolts installed in step 1.
6. Use 3/8" Allen (hex) wrench to secure unit to wall mount with washers and 1/2" x 1 1/4" bolts (quantity 4).



TORQUE X-CREATE BOOM MOUNT (XCREATE-BMXERT)

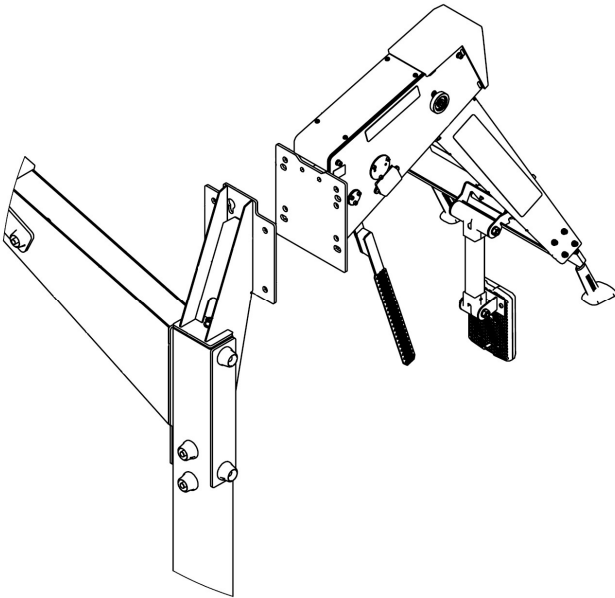


TORQUE X-CREATE SIDE ATTACHMENT MOUNT (XCREATE-SAM)

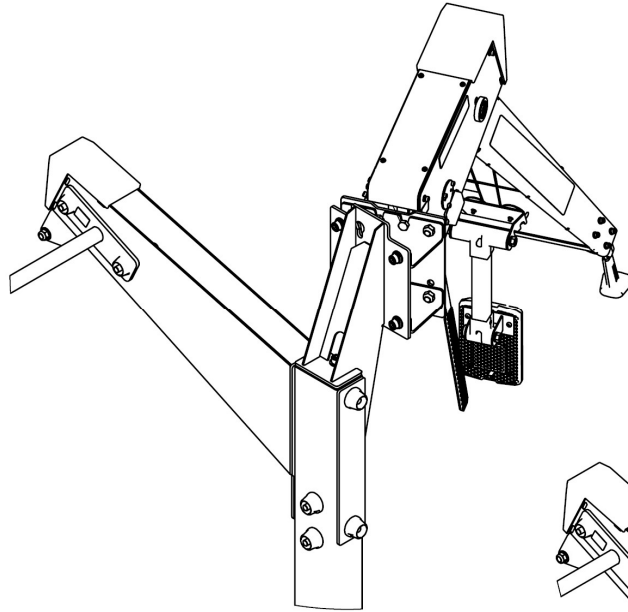


TORQUE X-CREATE SIDE ATTACHMENT MOUNTS

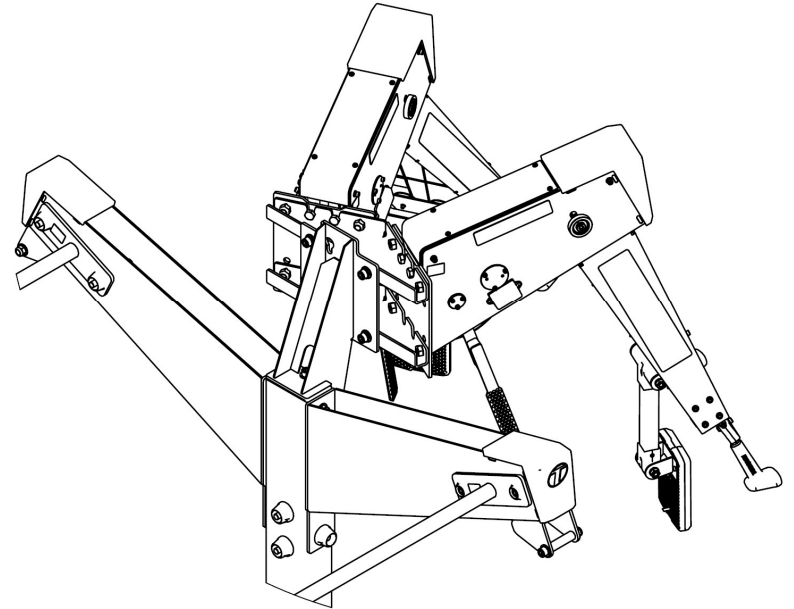
XCREATE-SAM



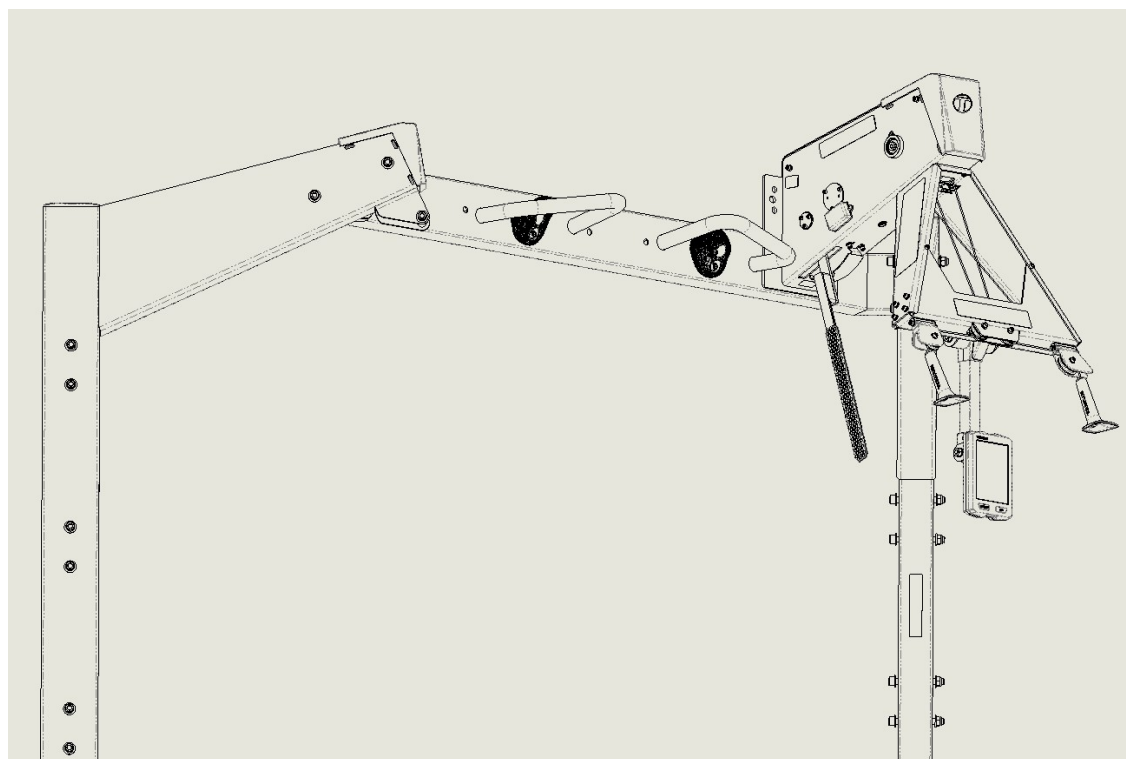
XCREATE-SAM-SUW



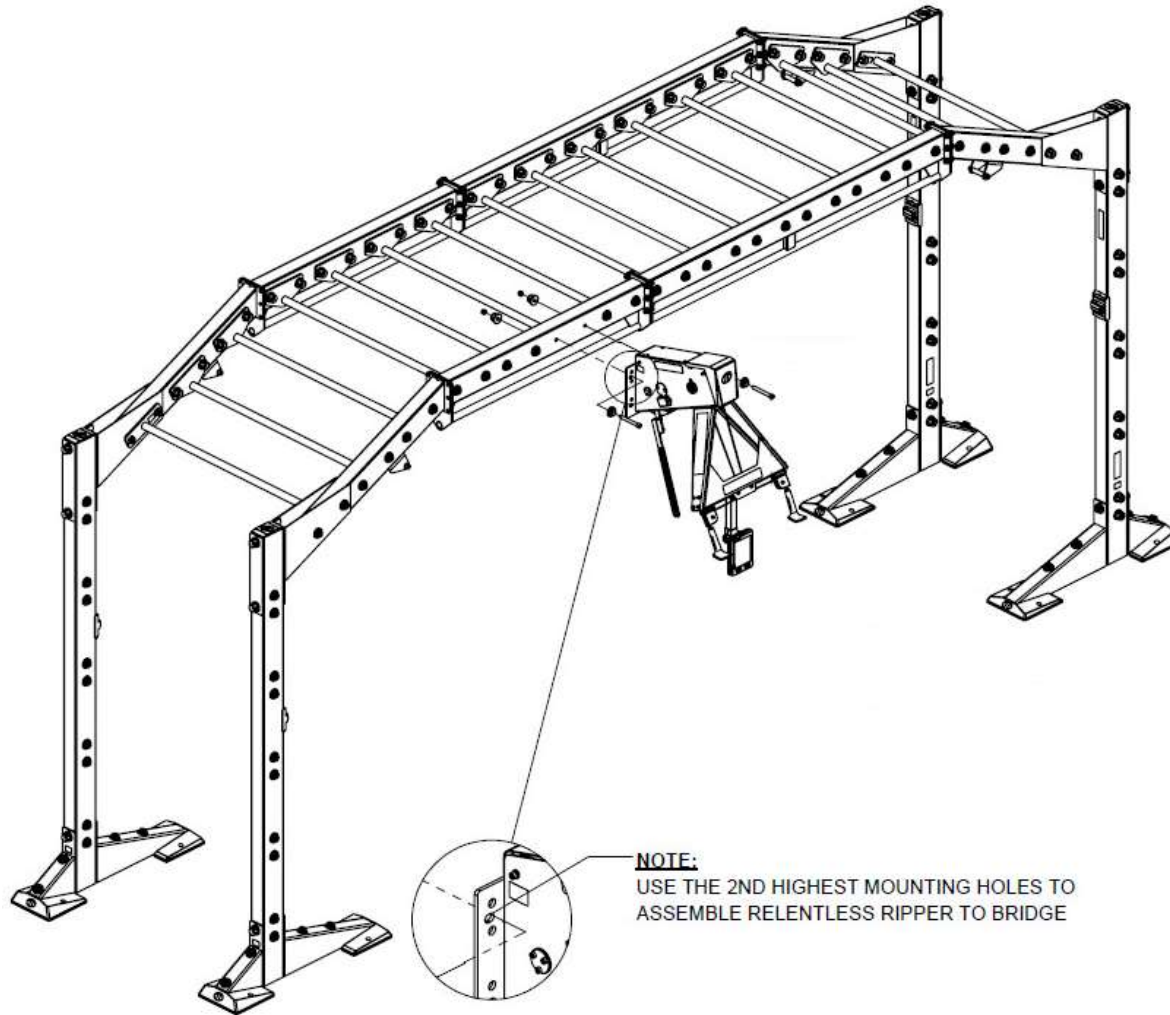
XCREATE-SAM-DUW



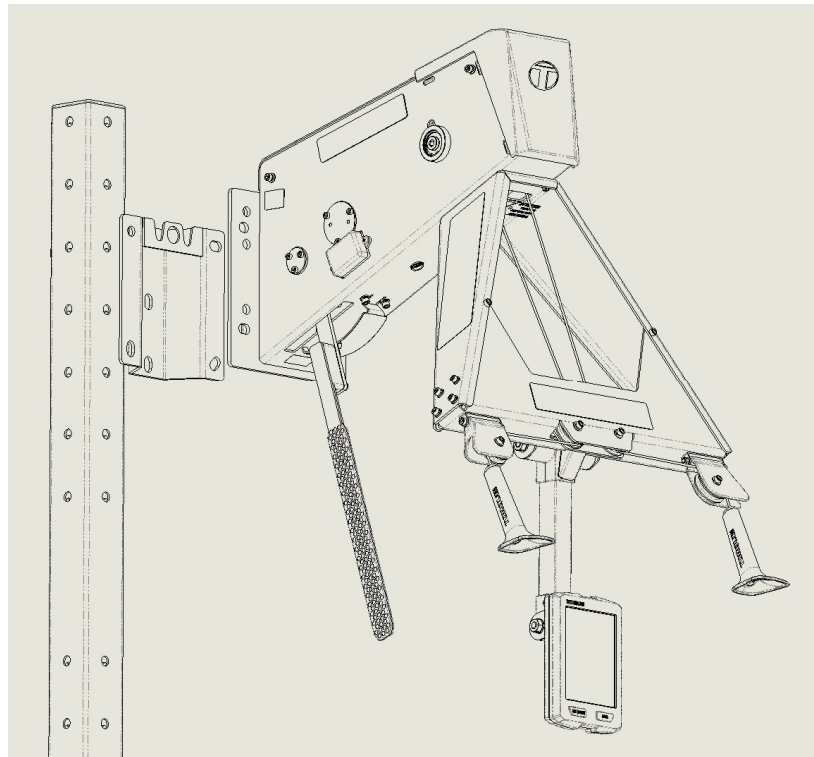
TORQUE X-CREATE CORNER SPACE



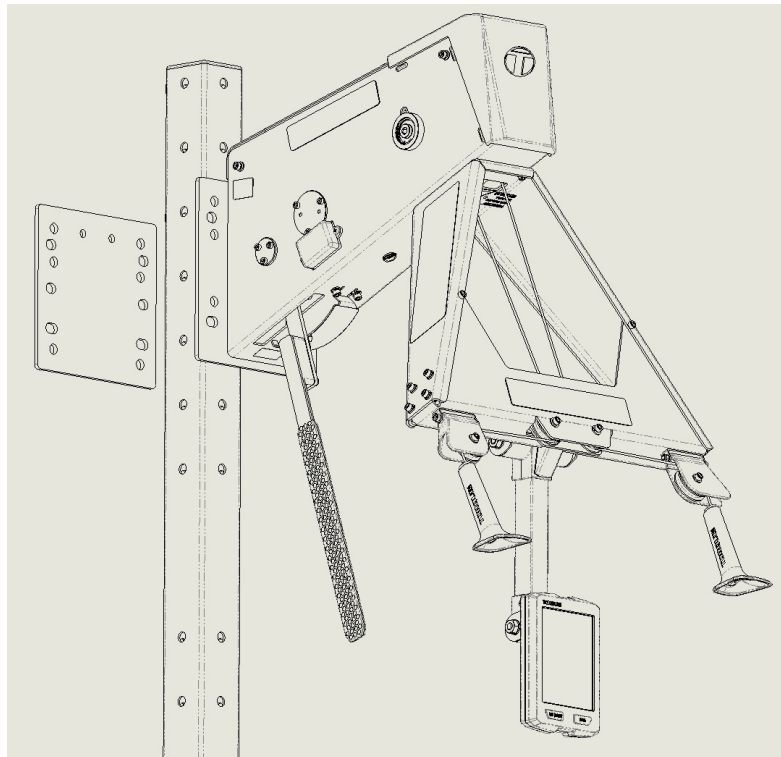
TORQUE X-CREATE BRIDGE SPACE



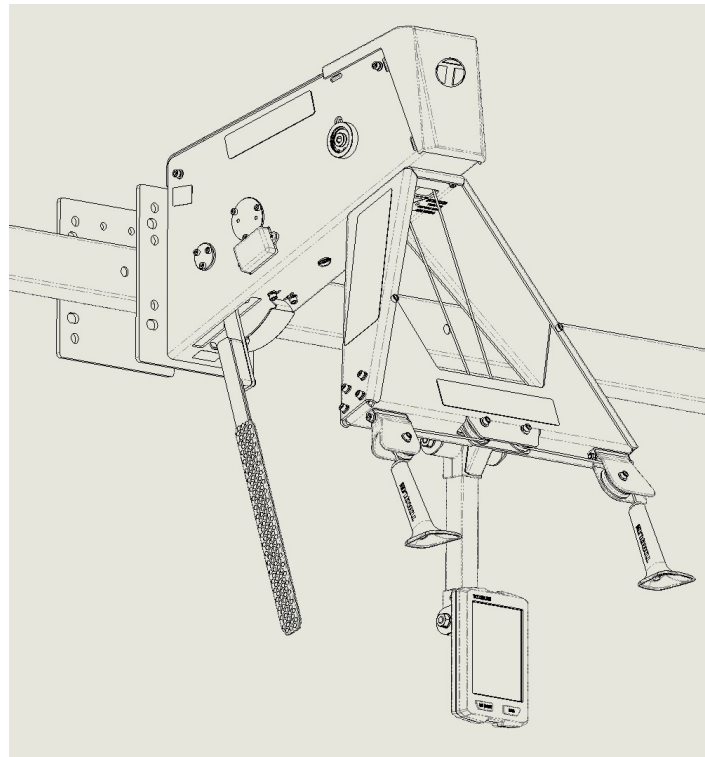
TORQUE AND OTHERS EQUIPMENT – VERTICAL TUBE



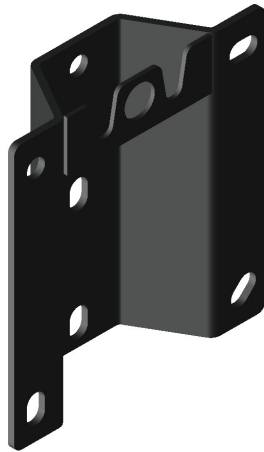
TORQUE AND OTHERS EQUIPMENT – VERTICAL TUBE



TORQUE AND OTHERS EQUIPMENT – HORIZONTAL TUBE

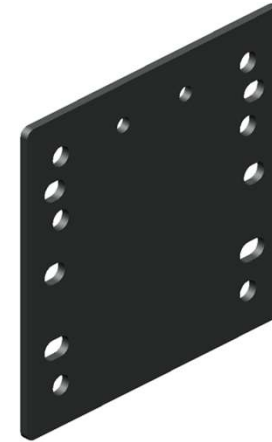


MOUNTING BRACKET AND PLATE



Our bracket includes three holes spaced 88 mm apart. It can be mounted to a vertical tube with 9/16" holes spaced 88 mm (3.5") or 176 mm (7")

It will also work on other hole centers if the holes are larger in diameter. Larger O.D heavy duty 1/2" washers may be necessary and are not included.



Our plate can be used for mounting to any vertical or horizontal rectangular tube up to 150 mm (6 inches) across.

1/2" bolts included will fit tubes between 57mm (2.25") and 88mm (3.5") in depth.

DON'T QUIT.
EVER.TM

TORQUE^{USA}